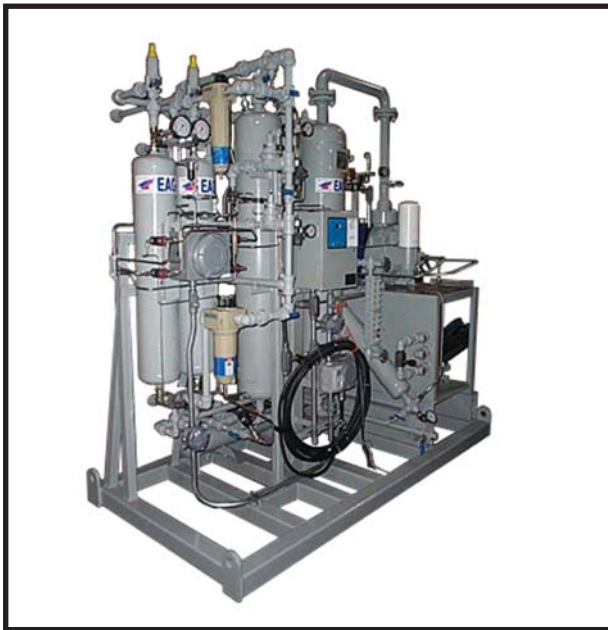


FCU140

FUEL GAS CONDITIONING UNIT

Eagle specializes in producing Fuel Gas Compression systems utilizing screw type compressor technology. The main function of the FCU is to draw annulus gas for discharge into Wet or Dry pipelines. With the increasing environmental and regulatory sensitivity over gas emissions, the Eagle FCU units provide an environmentally friendly solution to these concerns while maximizing the productivity and profitability of your well.



SPECIFICATIONS

- 4000 M3 of dry fuel gas per day
- 30 - 40 HP Electric or Hydraulic driven
- Discharge pressures to 190 PSIG
- Suction Pressures to 5 PSIG
- Eagle Heatless Regenerative Dryer reducing H₂O content to less than 4 lb/MMSCF - while lowering "heavy end" hydrocarbon content
- Meeting industry standards, CSA, ABSA, ASME & CRN.

SUCTION PRESSURE — PSIG	CAPACITY		MOTOR HP
	mcf/d	m3/d	
1	123	3482	40
2	131	3709	40
3	140	3963	40
4	148	4190	40
5	157	4445	40

Based on a discharge pressure of 125 PSIG. Inlet temperature 60° F. Altitude = 2215 FASL



705 — 5th Street S.W., Calgary, Alberta
Canada T2H 2G2
Toll Free: 888-831-2777
Phone: (403) 253-0100
Fax: (403) 253-8884
Website: www.eagle-pc.com