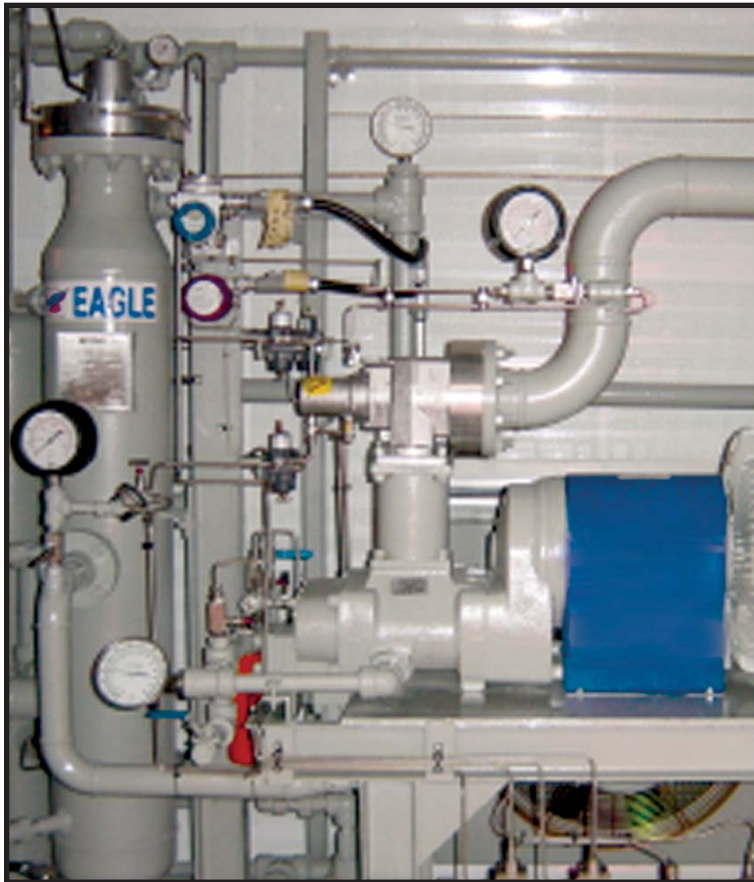


FCU650

FUEL GAS CONDITIONING UNIT

Eagle specializes in producing Fuel Gas Compression systems utilizing screw type compressor technology. The main function of the FCU is to draw annulus gas for discharge into Wet or Dry pipelines. With the increasing environmental and regulatory sensitivity over gas emissions, the Eagle FCU units provide an environmentally friendly solution to these concerns while maximizing the productivity and profitability of your well.



SPECIFICATIONS

- 18500 M3 of dry fuel gas per day
- 100—200 HP Electric or Hydraulic driven
- Discharge pressures to 190 PSIG
- Suction Pressures to 5 PSIG
- Eagle Heatless Regenerative Dryer reducing H₂O content to less than 4 lb/MMSCF - while lowering hydrocarbon content
- Meeting industry standards, CSA, ABSA, ASME & CRN.



705 — 5th Street S.W., Calgary, Alberta
Canada T2H 2G2
Toll Free: 888-831-2777
Phone: (403) 253-0100
Fax: (403) 253-8884
Website: www.eagle-pc.com