



INSTRUMENT AIR COMPRESSORS

PV SERIES

www.eagle-pc.com

Standard Equipment

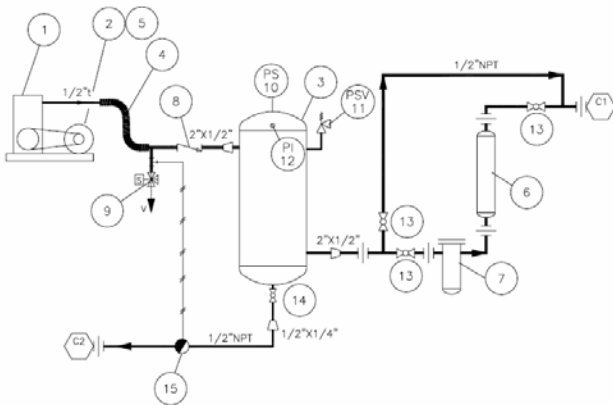
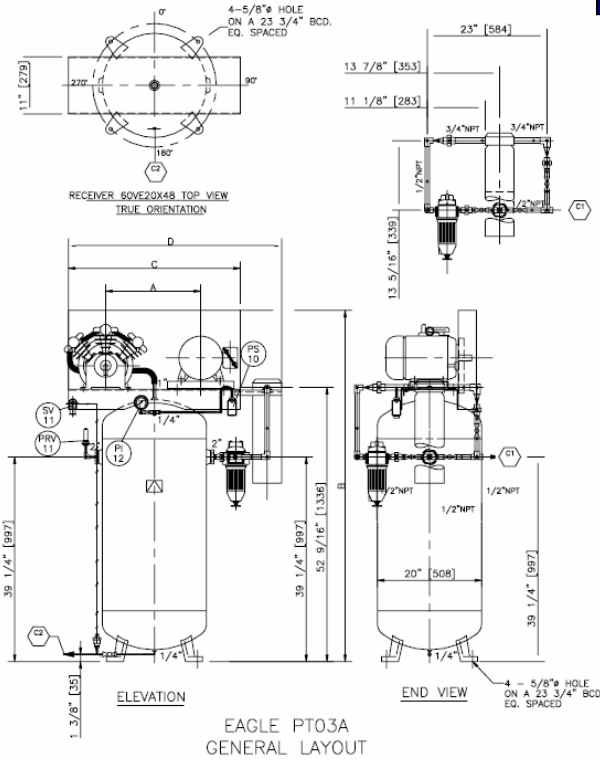
- Intake filter
- Cooling fan
- Oil level sightglass
- Finned discharge after cooler
- Pressure indicator
- Automatic tank drain
- Explosion proof pressure switch
- Pressure relief valve
- Unloading valve allow for loadless starting
- Explosion proof motor
- Belt guard
- Overall height: 66.0"
- Overall width: 41.0"

Optional Equipment

- Deltech Permeable Membrane Dryer
- Dryer bypass Valving
- 1 or 3 phase
- 208-230/460 volt motors

Performance Data

Model	SCFM	HP	PSI
PV02A	4 - 6	2	100
PTO3A	8 - 10	3	100



EAGLE		COMPETITOR
FEATURE	BENEFIT	
Slow Speed Cast Iron Compressor	Longer Life, Low Replacement Cost	May Be Aluminum, Faster Speeds, Shorter Life
3000# Galvanized Fittings, and Schedule 80 Galvanized Piping	No Flaking or Pipe Scale; Longer Life and Less Maintenance For filters and Instrumentation	May Be 150# Malleable or 2000# Not Galvanized
Membrane Dryer	No Moving Parts, No Electrical Hook-Up, No Replacement Parts, Low Cost	Desiccant Cartridge Dryer, Desiccant Needs Changing Frequently, Estimated Annual cost of \$800.00
High Performance Pre-Filter c/w Differential Pressure Indicator and Auto Drain	Minimal and Easy Maintenance, Low Contaminant Carryover (0.5 PPMW)	
Vertical Air Receiver	Compact, Space Effective Design	
High Quality Components and Material	Meets or Exceeds Most Oil and Gas Specifications	

* Schedule 80 piping, with F.S. galvanized 3000# fittings, 304SS tubing with cadmium plated Swagelok Fittings
THIS EQUIPMENT COULD REDUCE YOUR INSURANCE PREMIUMS.

EAGLE PUMP & COMPRESSOR LTD., 7025 - 5TH Street S.E., Calgary, Alberta T2H 2G2
 Ph: (403) 253-0100 Fax: (403) 253-8884